



*Advocating and Supporting our Schools & Community*

**2.6**

2023-2024

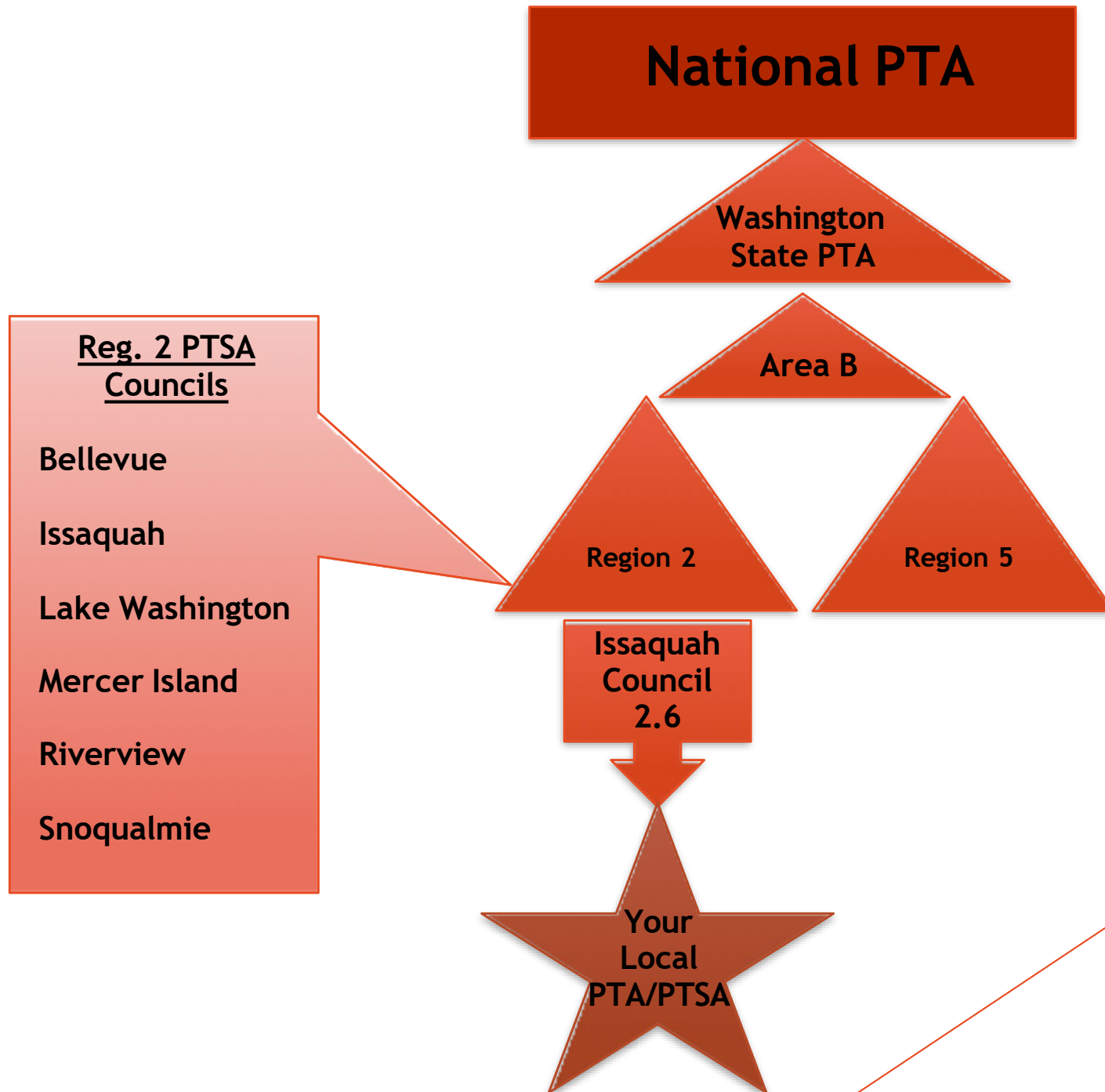
# Issaquah Parent Teacher Student Association (PTSA) Council Nuts & Bolts

- ▶ Non-Profit Organization, 501(c)3
- ▶ Members = local PTAs/PTSAs Presidents & Delegates in the Issaquah School District
- ▶ Monthly Board & Membership Meetings
- ▶ Each Local PTA/PTSA is Encouraged to Attend Monthly Membership Meeting
- ▶ Each Local PTA/PTSA Allowed 4 Voting Delegates
- ▶ Local PTA/PTSA Board Should Determine Who will Attend to Represent Them - However, Only Voting Delegates May Vote
- ▶ As a Member, You Reserve the Right to Invite Any of Your Members to Attend With You, However, Your Members May Not Choose To Attend on Their Own

# What Do We Do?

- ▶ Provide Resources
- ▶ Facilitate Communication
- ▶ Provide Leadership Development Opportunities & Training
- ▶ Advocate for All Children at the District and State Levels
- ▶ Develop Collaborative and Productive Relationships with School District Leaders
- ▶ Provide Local PTA/PTSAs with a Voice and Vote

# How Does it Fit Together?



# Questions?

## ▶ Elementary Schools

- ▶ South: Kristi Hammond - [vp-el-south@ issaquahptsa.org](mailto:vp-el-south@issaquahptsa.org)
  - ❖ Apollo, Briarwood, Clark, Cougar Ridge, IVE, Maple Hills, Newcastle, Sunset
- ▶ North: Tracie Jones - [vp-el-north@ issaquahptsa.org](mailto:vp-el-north@issaquahptsa.org)
  - ❖ Cascade Ridge, Challenger, Creekside, Discovery, Endeavour, Grand Ridge, Sunny Hills

- ▶ Secondary Schools: Karissa Mobilia
  - [vp-secondaryschools@issaquahptsa.org](mailto:vp-secondaryschools@issaquahptsa.org)

- ▶ Non-traditional PTSAs: Erin Eaton
  - [president@issaquahptsa.org](mailto:president@issaquahptsa.org)

# Additional Contacts

## ▶ Issaquah PTSA Council

- ▶ Council President: Erin Eaton
- ▶ Treasurer: Nikki Mason
- ▶ Secretary: Lauren Bartholomew

[president@Issaquahptsa.org](mailto:president@Issaquahptsa.org)

[treasurer@Issaquahptsa.org](mailto:treasurer@Issaquahptsa.org)

[secretary@Issaquahptsa.org](mailto:secretary@Issaquahptsa.org)

## ▶ Washington State PTA

- ▶ Region 2 Director: Lauren Bartholomew
- ▶ Area B Director: Jessica Smiddy
- ▶ President: Angela Speck
- ▶ Executive Director: Andrew Estep
- ▶ Staff: Robert Montenegro, Operations Manager  
Tatia Vasbinder, PTA Support Specialist  
Cory Wilson, Event Planner

[PTAreg2@WstatePTA.org](mailto:PTAreg2@WstatePTA.org)

[AreaBvp@WstatePTA.org](mailto:AreaBvp@WstatePTA.org)

[PTApres@WstatePTA.org](mailto:PTApres@WstatePTA.org)

[support@WstatePTA.org](mailto:support@WstatePTA.org)

[support@WstatePTA.org](mailto:support@WstatePTA.org)

**The Issaquah PTSA Council is  
Here to Support You in  
Everything You Do**

***Thank You for Your Service to the Families  
and Students in the Issaquah School  
District!***